



Only 32 min by Shinkansen from Tokyo Station.
Nearly Mt. Fuji.



Body and Soul Wellness
with Japanese Nature and Culture



Healing and relaxation
in historic Odawara and Hakone.

日本語



English



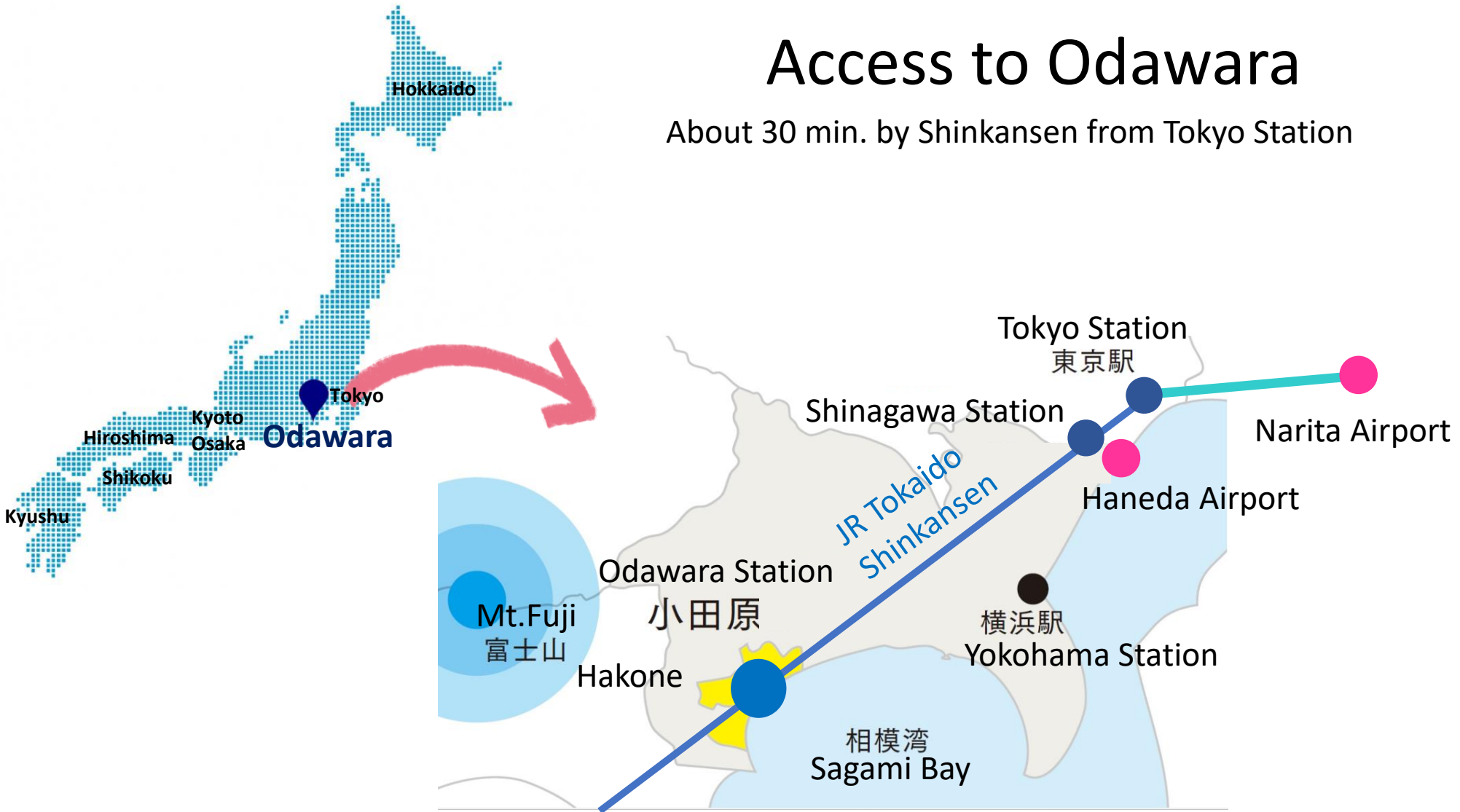
小田原箱根健診クリニック

ODAWARA HAKONE KENSHIN CLINIC

~Odawara Hakone Medical Center~

Access to Odawara

About 30 min. by Shinkansen from Tokyo Station





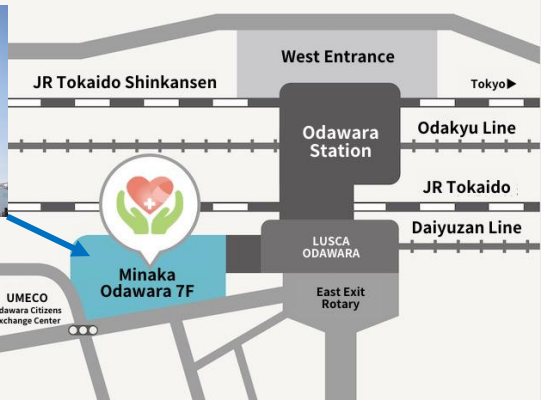
小田原箱根健診クリニック
ODAWARA HAKONE KENSHIN CLINIC
 ~Odawara Hakone Medical Center~
院内のご案内 Guide Map



Private Room



Minaka Odawara Building



Entrance Lobby



Sakura Lounge
-Gynecology
Examination Room-



IV Therapy Room



Clinical Laboratory Technician
-Medical Technologist-



Radiographic Examination Room



Endoscopy Room



Blood
Test Room



Ultrasound Scan Room



Corridor

“Ningen Dock” (Comprehensive Health Checkup) Packages



胃と大腸の内視鏡検査が同時に可能

Gastroscopy and colonoscopy can be performed at the same time.

ラグジュアリーなプライベート控え室有り

Luxury private waiting rooms available

女性特有の検査は女性医師、女性スタッフのみで対応

Female-specific examinations handled exclusively by female doctors and staff



小田原箱根健診クリニック

ODAWARA HAKONE KENSHIN CLINIC

~Odawara Hakone Medical Center~

Recommend Packages



小田原箱根健診クリニック
ODAWARA HAKONE KENSHIN CLINIC
~Odawara Hakone Medical Center~

In a comfortable environment, our staff will guide you with utmost care.

Limited to
2 people
per day

1日
限定
2人

Plus

Colonoscopy

富士 (Fuji) 1.5Days (About 8h + 2h)

城 (Castle) About 8h

Plus

DWIBS

Plus

DWIBS

Plus

Colonoscopy

海 (Ocean) About 8h

桜 (Sakura) About 7h

Gastroscopy

Colorectal cancer and Pancreatic cancer Assessments
Carotid ultrasound, Brain (Head) MRI · MRA scan,
Cervical (Neck) MRA, Chest and Abdominal CT scans,
Dementia Risk Screening

Plus

Bone density, TIBC, Ferritin, 1.5-AG, Thyroid Test, Tumor Markers,
Cerebral Infarction and Myocardial Infarction Assessments,
Gynecology (♀) Breast ultrasound (♀), Mammography (♀)

Plus

Group reservations available

団
体
可

椿 (Tsubaki) About 4h

梅 (Ume) About 3h

For those with busy schedules, we have streamlined the examination process, allowing you to undergo the necessary tests in approximately 3 hours.

梅 (Ume) About 3h

●医師の診察 Medical Consultation by Doctor

●計測 Measurements

身長、体重、腹囲、BMI、肥満度、視力、聴力、血圧

Height (metric), Weight, Waist circumference (metric), BMI, Obesity index, Visual acuity test, Audiometry test, Blood pressure

●超音波検査 Ultrasound Scan

上腹部超音波検査 Upper abdominal ultrasound

●放射線検査 Radiographic Examination

胸部X線検査 Chest X-ray

●生理学検査 Physiological Tests

心電図、心拍数、眼圧、眼底、肺機能

Electrocardiogram (ECG), Heart rate, Tonometry, Fundoscopy, Pulmonary Function test (PFTs)

●血液検査 Blood Analysis

<血液学> 赤血球数、白血球数、血小板数、血色素量(Hb)、ヘマトクリット、MCV、MCH、MCHC、血清鉄

<Blood Analysis> Red blood cell (RBC) count, White blood cell (WBC) count, Platelet count, Hemoglobin level (Hb), Hematocrit, MCV, MCH, MCHC, Serum iron level

<肝機能・膵機能> AST(GOT)、ALT(GPT)、 γ -GTP、ALP、コリンエステラーゼ、総ビリルビン、LDH、総蛋白、アルブミン、AG比、アミラーゼ

<Liver Panel・Pancreatic Function Test> AST(GOT), ALT(GPT), γ -GTP, ALP, Cholinesterase, total bilirubin, LDH, Total protein, albumin, Albumin-globulin ratio, Amylase

<脂質> 中性脂肪、総コレステロール、HDLコレステロール、LDLコレステロール、non-HDLコレステロール、動脈硬化指数

<Body Fat> Triglyceride, Total cholesterol, HDL cholesterol, LDL cholesterol, non-HDL cholesterol, Arteriosclerosis index

<腎機能・痛風> 尿素窒素、クレアチニン、eGFR(推算糸球体濾過量)、ナトリウム、カリウム、クロール、カルシウム、無機リン、尿酸

<Renal Function・Gout> Urea nitrogen, Creatinine, eGFR (Estimated glomerular filtration rate), Sodium, Potassium, Chloride, Calcium, Inorganic phosphorus, Uric acid

<糖代謝> 空腹時血糖、HbA1c

<Glucose Metabolism> Fasting blood glucose level, HbA1c

<肝炎ウイルス> HBs抗原、HBs抗体、HCV抗体

<Hepatitis> HBs antigen, HBs antibodies, HCV antibodies

<胃がんリスク> ヘリコバクターピロリ抗体、ペプシノーゲン判定

<Stomach Cancer Risk> Helicobacter pylori (H. Pylori) test, Pepsinogen test

<梅毒> RPR、TP抗体

<Syphilis> Rapid Plasma Regin (RPR), TP antibodies

<免疫学> CRP、RF定量

<Allergy and Immunology> C-Reactive protein (CRP), Rheumatoid factor

●尿検査 Urinalysis

尿糖、尿蛋白、尿潜血、尿pH、尿比重、尿ビリルビン、尿ウロビリノーゲン、尿沈渣

Glucose, Protein, Occult blood, Acidity (pH), Urine specific gravity, Bilirubin, Urobilinogen, Urine sediment

●便潜血検査 Fecal Occult Blood Test

便潜血2日法【採取可能な場合】

2-day fecal occult blood test (FOBT) 【If collection is possible】



椿 (Tsubaki) About 4h

●医師の診察 Medical Consultation by Doctor

●計測 Measurements

身長、体重、腹囲、BMI、肥満度、視力、聴力、血圧

Height (metric), Weight, Waist circumference (metric), BMI, Obesity index, Visual acuity test, Audiometry test, Blood pressure

●超音波検査 Ultrasound Scan

上腹部超音波検査、**乳腺超音波 (♀)**

Upper abdominal ultrasound, **Breast ultrasound (♀)**

●婦人科 Gynecology (♀)

経膣超音波、内診、子宮頸部細胞診、乳房視触診

Transvaginal ultrasound, Pelvic examination, Cervical cytology diagnosis (Pap Smear), Breast inspection palpation

●生理学検査 Physiological Tests

心電図、心拍数、眼圧、眼底、肺機能、**骨密度**

Electrocardiogram (ECG), Heart rate, Tonometry, funduscopy, Pulmonary function test (PFTs), **Bone density**

●放射線検査 Radiographic Examination

胸部X線検査、**マンモグラフィー (♀)**

Chest X-ray, **Mammography (♀)**

●血液検査 Blood Analysis

<血液学> 赤血球数、白血球数、血小板数、血色素量(Hb)、ヘマトクリット、MCV、MCH、MCHC、血清鉄、**TIBC、フェリチン**

<Hematology> Red blood cell (RBC) count, White blood cell (WBC) count, Platelet count, Hemoglobin level (Hb), Hematocrit, MCV, MCH, MCHC, Serum iron level, **TIBC, Ferritin**

<肝機能・膵機能> AST(GOT)、ALT(GPT)、 γ -GTP、ALP、コリンエステラーゼ、総ビリルビン、LDH、総蛋白、アルブミン、AG比、アミラーゼ

<Liver Panel・Pancreatic Function Test> AST(GOT), ALT(GPT), γ -GTP, ALP, Cholinesterase, Total bilirubin, LDH, total protein, Albumin, Albumin-globulin ratio, Amylase

<脂質> 中性脂肪、総コレステロール、HDLコレステロール、LDLコレステロール、non-HDLコレステロール、動脈硬化指数

<Body Fat> Triglyceride, Total cholesterol, HDL cholesterol, LDL Cholesterol, non-HDL cholesterol, Arteriosclerosis index

<腎機能・痛風> 尿素窒素、クレアチニン、eGFR(推算糸球体濾過量)、ナトリウム、カリウム、クロール、カルシウム、無機リン、尿酸

<Renal Function・Gout> Urea nitrogen, Creatinine, eGFR (Estimated glomerular filtration rate), Sodium, Potassium, Chloride, Calcium, Inorganic phosphorus, Uric acid

<糖代謝> 空腹時血糖、HbA1c, **1.5-AG**

<Glucose Metabolism> Fasting blood glucose level, HbA1c, **1.5-AG**

<免疫学> CRP、RF定量

<Allergy and Immunology> C-Reactive protein (CRP), Rheumatoid factor

<梅毒> RPR、TP抗体

<Syphilis> Rapid Plasma Regin (RPR), TP antibodies

<胃がんリスク> ヘリコバクターピロリ抗体、ペプシノーゲン判定

<Stomach Cancer Risk> Helicobacter pylori (H. Pylori) test, Pepsinogen test

<肝炎ウイルス> HBs抗原、HBs抗体、HCV抗体

<Hepatitis> HBs antigen, HBs antibodies, HCV antibodies

<腫瘍マーカー> **CEA、SCC抗原、CYFRA、Pro-GRP、AFP、エラスターゼ1、CA19-9、CA125 (♀)、CA15-3 (♀)、PSA (♂)**

<Tumor Markers> **CEA, SCC antigen, CYFRA, Pro-GRP, AFP, CA19-9, Elastase1, CA125 (♀), CA15-3 (♀), PSA (♂)**

<甲状腺> **TSH、FT3、FT4**

<Thyroid Test> **TSH, FT3, FT4**

<脳・心筋梗塞リスク> **Lox-Index**

<Cerebral Infarction and Myocardial Infarction Assessments> **LOX-index® testing method**

●尿検査 Urinalysis

尿糖、尿蛋白、尿潜血、尿pH、尿比重、尿ビリルビン、尿ウロビリノーゲン、尿沈渣

Glucose, Protein, Occult blood, Acidity (pH), Urine specific gravity, Bilirubin, Urobilinogen, Urine sediment

●便潜血検査 Fecal Occult Blood Test

便潜血2日法 ※採取可能な場合

2-day fecal occult blood test (FOBT) ※If collection is possible



桜 (Sakura)

About 6h

●内視鏡 Endoscopy Test
上部消化管内視鏡検査 (胃カメラ)
Gastroscopy



●医師の診察 Medical Consultation by Doctor

●計測 Measurements

身長、体重、腹囲、BMI、肥満度、視力、聴力、血圧

Height (metric), Weight, Waist circumference (metric), BMI, Obesity index, Visual acuity test, Audiometry test, Blood pressure

●超音波検査 Ultrasound Scan

上腹部超音波検査、頸動脈超音波、乳腺超音波 (♀)

Upper abdominal ultrasound, Carotid ultrasound, Breast ultrasound (♀)

●婦人科 Gynecology (♀)

経膣超音波、内診、子宮頸部細胞診、乳房視触診

Transvaginal ultrasound, Pelvic examination, Cervical cytology diagnosis (Pap Smear), Breast Inspection palpation

●生理学検査 Physiological Tests

心電図、心拍数、眼圧、眼底、肺機能、骨密度

Electrocardiogram (ECG), Heart rate, Tonometry, Fundoscopy, Pulmonary function test (PFTs), Bone density

●放射線検査 Radiographic Examination

胸部X線検査、胸部CT、頭部MRI・MRA、頸部MRA、認知症リスク検査、マンモグラフィー (♀)

Chest X-ray, Chest and Abdominal CT scans, Brain (Head) MRI・MRA scan, Cervical (Neck) MRA, Dementia Risk Screening, Mammography (♀)

●血液検査 Blood Analysis

<血液学> 赤血球数、白血球数、血小板数、血色素量(Hb)、ヘマトクリット、MCV、MCH、MCHC、血清鉄、TIBC、フェリチン

<Hematology> Red blood cell (RBC) count, White blood cell (WBC) count, Platelet count, Hemoglobin level (Hb), Hematocrit, MCV, MCH, MCHC, Serum iron level, TIBC, Ferritin

<肝機能・膵機能> AST(GOT)、ALT(GPT)、γ-GTP、ALP、コリンエステラーゼ、総ビリルビン、LDH、総蛋白、アルブミン、AG比、アミラーゼ

<Liver Panel・Pancreatic Function Test> AST(GOT), ALT(GPT), γ-GTP, ALP, Cholinesterase, Total bilirubin, LDH, Total protein, Albumin, Albumin-globulin ratio, Amylase

<脂質> 中性脂肪、総コレステロール、HDLコレステロール、LDLコレステロール、non-HDLコレステロール、動脈硬化指数

<Body Fat> triglyceride, Total cholesterol, HDL cholesterol, LDL cholesterol, non-HDL cholesterol, Arteriosclerosis index

<腎機能・痛風> 尿素窒素、クレアチニン、eGFR(推算糸球体濾過量)、ナトリウム、カリウム、クロール、カルシウム、無機リン、尿酸

<Renal Function・Gout> Urea nitrogen, creatinine, eGFR (Estimated glomerular filtration rate), Sodium, Potassium, Chloride, Calcium, Inorganic phosphorus, Uric acid

<糖代謝> 空腹時血糖、HbA1c, 1.5-AG

<Glucose Metabolism> Fasting blood glucose level, HbA1c, 1.5-AG

<胃がんリスク> ヘリコバクターピロリ抗体、ペプシノーゲン判定

<Stomach Cancer Risk> Helicobacter pylori (H. Pylori) test, Pepsinogen test

<梅毒> RPR、TP抗体

<Syphilis> Rapid Plasma Regin (RPR), TP antibodies

<腫瘍マーカー> CEA、SCC抗原、CYFRA、Pro-GRP、AFP、エラスターゼ1、CA19-9、CA125 (♀)、CA15-3 (♀)、PSA (♂)

<Tumor Markers> CEA, SCC antigen, CYFRA, Pro-GRP, AFP, CA19-9, elastase1, CA125 (♀), CA15-3 (♀), PSA (♂)

<肝炎ウイルス> HBs抗原、HBs抗体、HCV抗体

<Hepatitis> HBs antigen, HBs antibodies, HCV antibodies

<脳・心筋梗塞リスク> Lox-Index

<Cerebral Infarction and Myocardial Infarction Assessments> LOX-index® testing method

<甲状腺> TSH、FT3、FT4

<Thyroid Test> TSH, FT3, FT4

<大腸がんリスク・すい臓がんリスク> ProtoKey

<Colorectal cancer and Pancreatic cancer Assessments> ProtoKey® testing method

<免疫学> CRP、RF定量

<Allergy and Immunology> C-Reactive protein (CRP), Rheumatoid factor

●尿検査 Urinalysis

尿糖、尿蛋白、尿潜血、尿pH、尿比重、尿ビリルビン、尿ウロビリノーゲン、尿沈渣

Glucose, protein, Occult blood, Acidity (pH), Urine specific gravity, Bilirubin, Urobilinogen, Urine sediment



海 (Ocean) About 8h

●医師の診察 Medical Consultation by Doctor

●計測 Measurements

身長、体重、腹囲、BMI、肥満度、視力、聴力、血圧

Height (metric), Weight, Waist circumference (metric), BMI, Obesity index, Visual acuity test, Audiometry test, Blood pressure

●超音波検査 Ultrasound Scan

上腹部超音波検査、頸動脈超音波、乳腺超音波 (♀)

Upper abdominal ultrasound, Carotid ultrasound, Breast ultrasound (♀)

●生理学検査 Physiological Tests

心電図、心拍数、眼圧、眼底、肺機能、骨密度

Electrocardiogram (ECG), Heart rate, tonometry, Fundoscopy, Pulmonary function test (PFTs), Bone density

●血液検査 Blood Analysis

<血液学> 赤血球数、白血球数、血小板数、血色素量(Hb)、ヘマトクリット、MCV、MCH、MCHC、血清鉄、TIBC、フェリチン

<Hematology> Red blood cell (RBC) count, White blood cell (WBC) count, Platelet count, Hemoglobin level (Hb), Hematocrit, MCV, MCH, MCHC, Serum iron level, TIBC, Ferritin

<肝機能・膵機能> AST(GOT)、ALT(GPT)、γ-GTP、ALP、コリンエステラーゼ、総ビリルビン、LDH、総蛋白、アルブミン、AG比、アミラーゼ

<Liver Panel・Pancreatic Function Test> AST(GOT), ALT(GPT), γ-GTP, ALP, Cholinesterase, Total bilirubin, LDH, Total protein, Albumin, Albumin-globulin ratio, Amylase

<脂質> 中性脂肪、総コレステロール、HDLコレステロール、LDLコレステロール、non-HDLコレステロール、動脈硬化指数

<Body Fat> Triglyceride, Total cholesterol, HDL cholesterol, LDL cholesterol, non-HDL cholesterol, Arteriosclerosis index

<腎機能・痛風> 尿素窒素、クレアチニン、eGFR(推算糸球体濾過量)、ナトリウム、カリウム、クロール、カルシウム、無機リン、尿酸

<Renal Function・Gout> Urea nitrogen, Creatinine, eGFR (Estimated glomerular filtration rate), Sodium, Potassium, Chloride, Calcium, Inorganic phosphorus, Uric acid

<糖代謝> 空腹時血糖、HbA1c, 1.5-AG

<Glucose Metabolism> Fasting blood glucose level, HbA1c, 1.5-AG

<梅毒> RPR、TP抗体

<Syphilis> Rapid Plasma Regn (RPR), TP antibodies

<肝炎ウイルス> HBs抗原、HBs抗体、HCV抗体

<Hepatitis> HBs antigen, HBs antibodies, HCV antibodies

<甲状腺> TSH、FT3、FT4

<Thyroid Test> TSH, FT3, FT4

<免疫学> CRP、RF定量

<Allergy and Immunology> C-Reactive protein (CRP), Rheumatoid factor

●内視鏡 Endoscopy Test

上部消化管内視鏡検査 (胃カメラ)

Gastroscopy

下部消化管内視鏡検査 (大腸カメラ)

Colonoscopy

●婦人科 Gynecology (♀)

経膣超音波、内診、子宮頸部細胞診、乳房視触診

Transvaginal ultrasound, Pelvic examination, Cervical cytology diagnosis (Pap Smear), Breast Inspection palpation

●放射線検査 Radiographic Examination

胸部X線検査、胸腹部CT、頭部MRI・MRA、頸部MRA、認知症リスク検査、マンモグラフィー (♀)

Chest X-ray, Chest and Abdominal CT scans, Brain (Head) MRI・MRA scan, Cervical (Neck) MRA, Dementia Risk Screening, Mammography (♀)



<胃がんリスク> ヘリコバクターピロリ抗体、ペプシノーゲン判定

<Stomach Cancer Risk> Helicobacter pylori (H. Pylori) test, Pepsinogen test

<腫瘍マーカー> CEA、SCC抗原、CYFRA、Pro-GRP、AFP、エラスターゼ1、CA19-9、CA125 (♀)、CA15-3 (♀)、PSA (♂)

<Tumor Markers> CEA, SCC antigen, CYFRA, Pro-GRP, AFP, CA19-9, elastase1, CA125 (♀), CA15-3 (♀), PSA (♂)

<脳・心筋梗塞リスク> Lox-Index

<Cerebral Infarction and Myocardial Infarction Assessments> LOX-index® testing method

<大腸がんリスク・すい臓がんリスク> ProtoKey

<Colorectal cancer and Pancreatic cancer Assessments> ProtoKey® testing method

●尿検査 Urinalysis

尿糖、尿蛋白、尿潜血、尿pH、尿比重、尿ビリルビン、尿ウロビリノーゲン、尿沈渣

Glucose, protein, Occult blood, Acidity (pH), Urine specific gravity, Bilirubin, Urobilinogen, Urine sediment



城 (Castle) About 8h

●医師の診察 Medical Consultation by Doctor

●計測 Measurements

身長、体重、腹囲、BMI、肥満度、視力、聴力、血圧

Height (metric), Weight, Waist circumference (metric), BMI, Obesity index, Visual acuity test, Audiometry test, Blood pressure

●超音波検査 Ultrasound Scan

上腹部超音波検査、頸動脈超音波、乳腺超音波 (♀)

Upper abdominal ultrasound, Carotid ultrasound, Breast ultrasound (♀)

●生理学検査 Physiological Tests

心電図、心拍数、眼圧、眼底、肺機能、骨密度

Electrocardiogram (ECG), Heart rate, Tonometry, Funduscopy, Pulmonary function test (PFTs), Bone density

●血液検査 Blood Analysis

<血液学> 赤血球数、白血球数、血小板数、血色素量(Hb)、ヘマトクリット、MCV、MCH、MCHC、血清鉄、TIBC、フェリチン

<Hematology> Red blood cell (RBC) count, White blood cell (WBC) count, Platelet count, Hemoglobin level (Hb), Hematocrit, MCV, MCH, MCHC, Serum iron level, TIBC, Ferritin

<肝機能・膵機能> AST(GOT)、ALT(GPT)、γ-GTP、ALP、コリンエステラーゼ、総ビリルビン、LDH、総蛋白、アルブミン、AG比、アミラーゼ

<Liver Panel・Pancreatic Function Test> AST(GOT), ALT(GPT), γ-GTP, ALP, Cholinesterase, Total bilirubin, LDH, Total protein, Albumin, Albumin-globulin ratio, Amylase

<脂質> 中性脂肪、総コレステロール、HDLコレステロール、LDLコレステロール、non-HDLコレステロール、動脈硬化指数

<Body Fat> Triglyceride, Total cholesterol, HDL cholesterol, LDL cholesterol, non-HDL cholesterol, Arteriosclerosis index

<腎機能・痛風> 尿素窒素、クレアチニン、eGFR(推算糸球体濾過量)、ナトリウム、カリウム、クロール、カルシウム、無機リン、尿酸

<Renal Function・Gout> Urea nitrogen, Creatinine, eGFR (Estimated glomerular filtration rate), Sodium, Potassium, Chloride, Calcium, Inorganic phosphorus, Uric acid

<糖代謝> 空腹時血糖、HbA1c, 1.5-AG

<Glucose Metabolism> Fasting blood glucose level, HbA1c, 1.5-AG

<梅毒> RPR、TP抗体

<Syphilis> Rapid Plasma Regin (RPR), TP antibodies

<肝炎ウイルス> HBs抗原、HBs抗体、HCV抗体

<Hepatitis> HBs antigen, HBs antibodies, HCV antibodies

<甲状腺> TSH、FT3、FT4

<Thyroid Test> TSH, FT3, FT4

<免疫学> CRP、RF定量

<Allergy and Immunology> C-Reactive protein (CRP), Rheumatoid factor

<胃がんリスク> ヘリコバクターピロリ抗体、ペプシノーゲン判定

<Stomach Cancer Risk> Helicobacter pylori (H. Pylori) test, pepsinogen test

<腫瘍マーカー> CEA、SCC抗原、CYFRA、Pro-GRP、AFP、エラスターゼ1、CA19-9、CA125 (♀)、CA15-3 (♀)、PSA (♂)

<Tumor Markers> CEA, SCC antigen, CYFRA, Pro-GRP, AFP, CA19-9, elastase1, CA125 (♀), CA15-3 (♀), PSA (♂)

<脳・心筋梗塞リスク> Lox-Index

<Cerebral Infarction and Myocardial Infarction Assessments> LOX-index® testing method

<大腸がんリスク・すい臓がんリスク> ProtoKey

<Colorectal cancer and Pancreatic cancer Assessments> ProtoKey® testing method

●尿検査 Urinalysis

尿糖、尿蛋白、尿潜血、尿pH、尿比重、尿ビリルビン、尿ウロビリノーゲン、尿沈渣

Glucose, protein, Occult blood, Acidity (pH), Urine specific gravity, Bilirubin, Urobilinogen, Urine sediment

●内視鏡 Endoscopy Test

上部消化管内視鏡検査 (胃カメラ)

Gastroscopy

●婦人科 Gynecology (♀)

経膣超音波、内診、子宮頸部細胞診、乳房視触診

Transvaginal ultrasound, Pelvic examination, Cervical cytology diagnosis (Pap Smear), Breast Inspection palpation

●放射線検査 Radiographic Examination

胸部X線検査、胸腹部CT、頭部MRI・MRA、頸部MRA、認知症リスク検査、

DWIBS,マンモグラフィー (♀)

Chest X-ray, Chest and Abdominal CT scans, Brain (Head) MRI・MRA scan,

Cervical (Neck) MRA, Dementia Risk Screening, DWIBS, Mammography (♀)



富士 (Fuji) 1.5Days (About 8h + 2h)

●医師の診察 Medical Consultation by Doctor

●計測 Measurements

身長、体重、腹囲、BMI、肥満度、視力、聴力、血圧

Height (metric), Weight, Waist circumference (metric), BMI, Obesity index, Visual acuity test, Audiometry test, Blood pressure

●超音波検査 Ultrasound Scan

上腹部超音波検査、頸動脈超音波、乳腺超音波 (♀)

Upper abdominal ultrasound, Carotid ultrasound, Breast ultrasound (♀)

●婦人科 Gynecology (♀)

経膣超音波、内診、子宮頸部細胞診、乳房視触診

Transvaginal ultrasound, Pelvic examination, Cervical cytology diagnosis (Pap Smear), Breast Inspection palpation

●生理学検査 Physiological Tests

心電図、心拍数、眼圧、眼底、肺機能、骨密度

Electrocardiogram (ECG), Heart rate, Tonometry, Fundoscopy, Pulmonary function test (PFTs), Bone density

●血液検査 Blood Analysis

<血液学> 赤血球数、白血球数、血小板数、血色素量(Hb)、ヘマトクリット、MCV、MCH、MCHC、血清鉄、TIBC、フェリチン

<Hematology> Red blood cell (RBC) count, White blood cell (WBC) count, Platelet count, Hemoglobin level (Hb), Hematocrit, MCV, MCH, MCHC, Serum iron level, TIBC, Ferritin

<肝機能・膵機能> AST(GOT)、ALT(GPT)、γ-GTP、ALP、コリンエステラーゼ、総ビリルビン、LDH、総蛋白、アルブミン、AG比、アミラーゼ

<Liver Panel・Pancreatic Function Test> AST(GOT), ALT(GPT), γ-GTP, ALP, Cholinesterase, Total bilirubin, LDH, Total protein, Albumin, Albumin-globulin ratio, Amylase

<脂質> 中性脂肪、総コレステロール、HDLコレステロール、LDLコレステロール、non-HDLコレステロール、動脈硬化指数

<Body Fat> Triglyceride, Total cholesterol, HDL cholesterol, LDL cholesterol, non-HDL cholesterol, Arteriosclerosis index

<腎機能・痛風> 尿素窒素、クレアチニン、eGFR(推算糸球体濾過量)、ナトリウム、カリウム、クロール、カルシウム、無機リン、尿酸

<Renal Function・Gout> Urea nitrogen, Creatinine, eGFR (Estimated glomerular filtration rate), Sodium, Potassium, Chloride, Calcium, Inorganic phosphorus, Uric acid

<糖代謝> 空腹時血糖、HbA1c, 1.5-AG

<Glucose Metabolism> Fasting blood glucose level, HbA1c, 1.5-AG

<梅毒> RPR、TP抗体

<Syphilis> Rapid Plasma Regin (RPR), TP antibodies

<肝炎ウイルス> HBs抗原、HBs抗体、HCV抗体

<Hepatitis> HBs antigen, HBs antibodies, HCV antibodies

<甲状腺> TSH、FT3、FT4

<Thyroid Test> TSH, FT3, FT4

<免疫学> CRP、RF定量

<Allergy and Immunology> C-Reactive protein (CRP), Rheumatoid factor

<胃がんリスク> ヘリコバクターピロリ抗体、ペプシノーゲン判定

<Stomach Cancer Risk> Helicobacter pylori (H. Pylori) test, Pepsinogen test

<腫瘍マーカー> CEA、SCC抗原、CYFRA、Pro-GRP、AFP、エラスターゼ1、CA19-9、CA125 (♀)、CA15-3 (♀)、PSA (♂)

<Tumor Markers> CEA, SCC antigen, CYFRA, Pro-GRP, AFP, CA19-9, elastase1, CA125 (♀), CA15-3 (♀), PSA (♂)

<脳・心筋梗塞リスク> Lox-Index

<Cerebral Infarction and Myocardial Infarction Assessments> LOX-index® testing method

<大腸がんリスク・すい臓がんリスク> ProtoKey

<Colorectal cancer and Pancreatic cancer Assessments> ProtoKey® testing method

●尿検査 Urinalysis

尿糖、尿蛋白、尿潜血、尿pH、尿比重、尿ビリルビン、尿ウロビリノーゲン、尿沈渣

Glucose, Protein, Occult blood, Acidity (pH), Urine specific gravity, Bilirubin, Urobilinogen, Urine sediment

●内視鏡 Endoscopy Test

上部消化管内視鏡検査 (胃カメラ)

Gastroscopy

下部消化管内視鏡検査 (大腸カメラ)

Colonoscopy



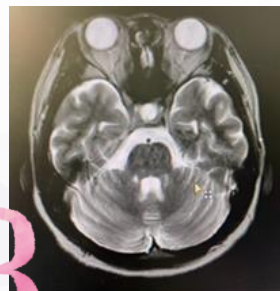
Option Menu

A



Gastroscopy and Colonoscopy

B



Brain Screening

C



Lung Cancer Screening

D



DWIBS

所要時間
Required
time

About 120 min.
Only PM

About 40 min.

About 30 min.

About 60 min.

内容
Content

胃と大腸など消化器系のがんを早期に発見するために、内視鏡検査と腫瘍マーカー検査を行います。

<Tumor Markers> CEA, CA19-9
※生検、ポリープ切除は別途料金がかかります

Gastroscopy and colonoscopy detect gastric and colorectal cancer at an early stage. You can experience the world's highest level of endoscopy.

* Biopsy and polypectomy will be charged separately.

最高水準のMRI撮影装置により、脳腫瘍、脳梗塞、脳萎縮の早期発見ができます。脳卒中や脳梗塞のリスクを解析し、認知症リスクも確認できます。

Cutting-edge MRI imaging equipment enables early detection of brain tumors, cerebral infarction, and brain atrophy. The risk of stroke can be analyzed, and the risk of dementia can also be confirmed.

肺がん・肺気腫・肺炎間質性肺炎の早期発見を目的に、胸部CT検査と腫瘍マーカーを組み合わせた検査です。<Tumor Markers> CEA, SCC antigen, CYFRA, Pro-GRP

A test that combines a chest CT scan with four types of tumor markers for the early detection of lung cancer. It leads to early detection of lung cancer, emphysema, pneumonia, interstitial pneumonia, etc.

MRIで頸部から骨盤までを撮影し、全身のがんを検索します。PET-CTと異なり被ばくが一切なく、薬物も使用せず、短時間でできる最新の優れた検査です。

MRI scans from the neck to the pelvis to search for cancer throughout the body. Unlike PET-CT scans, there is no exposure to radiation, making the examination convenient and safer.

Healthy & Anti-Aging IV Therapy



E

High-Dose Vitamin C IV Therapy

F

Diet IV Therapy

G

Recovery from Fatigue IV Therapy

H

Super Antioxidant IV Therapy

所要時間

About 40 min.

About 30 min.

About 30 min.
Injection/about 3 min.

About 40 min.

内容

【高濃度ビタミンC点滴】
通常よりもかなり高濃度のビタミンCを点滴することで、**免疫力の向上、美白や疲労回復効果**をもたらします。

By administering a highly concentrated dose of Vitamin C intravenously, we can **enhance immunity, promote skin brightening, and facilitate fatigue recovery** to a greater extent than with regular doses.

【ダイエット点滴】
糖と脂肪の代謝を促進して**ダイエットサポート**をする点滴です。

This drip is designed to promote the metabolism of sugars and fats, **providing support for weight loss efforts.**

【疲労回復にんにく点滴】
とにかく疲れとだるさを取りたい方、二日酔いの方におすすめです。

This drip is recommended for those who want to alleviate fatigue and lethargy, as well as for those experiencing hangovers.

【スーパー抗酸化点滴】
美白、アンチエイジングに特化し、**さらに美肌を目指す人**への点滴です。

The drip is specially formulated for whitening and anti-aging, **catering to individuals aiming for radiant skin.**

2~3種類の点滴の組み合わせ可能 ※FとIの組み合わせのみ不可
Combination of 2 to 3 types of drips available ※The combination of F and I is unavailable.

エクソソーム点滴

Pure Exosom IV Therapy

当院で採用しているエクソソーム製剤は、1ccあたり**含有量500億個以上を保証**

1回**2cc**

※エクソソーム有含量**1,000億個以上保証**

1回**4cc**

※エクソソーム有含量**2,000億個以上保証**



当日のご案内

- ①問診
- ②医師診察
- ③当院展望サロンまたはプライベートルームにて点滴投与

【所要時間】 約30分

お持ち帰り

6cc～

- ※エクソソーム有含量**3,000億個以上保証**
- ※フリーズドライ製品です
- ※保冷バックに入れてお渡しいたします
- ※3回に分けてお持ち帰りいただけます



小田原箱根健診クリニック

Odawara Hakone Medical Center

Optional Menus

Healthy & Anti-Aging IV Therapy Menus

人間ドックパッケージとオプションメニュー、健康点滴を組みあせてすることができます。
You can combine “Ningen Dock” (Comprehensive Health Checkup) package with optional menus and IV Therapy Menus.

Example

富士 (Fuji)

+ エクソソーム点滴 Pure Exosom IV Therapy

椿 (Tsubaki)

+ D DWIBS + H Super Antioxidant IV Therapy

梅 (Ume)

+ A Gastroscopy and Colonoscopy + C Lung Cancer Screening + F Diet IV Therapy

A

胃部内視鏡・大腸内視鏡検査 Gastroscopy and Colonoscopy

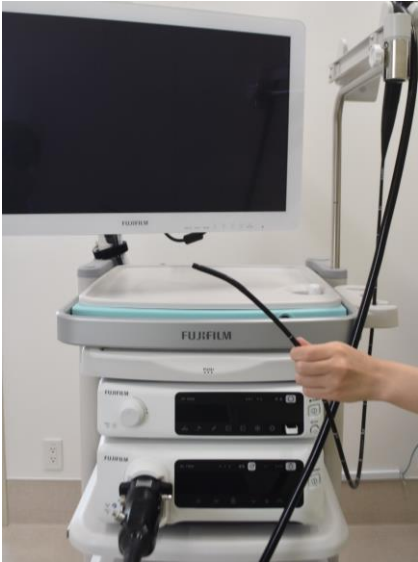
Required time of about 120 min.

胃がんと大腸がんの早期発見のために、胃部内視鏡と大腸内視鏡検査、腫瘍マーカーを組み合わせた検査です。

Our gastric cancer and colorectal cancer screening combines **gastroscopy, colonoscopy, and tumor marker tests** ※CEA・CA19-9 to detect stomach and colon cancer at an early stage.

胃部内視鏡・大腸内視鏡前日のご夕食は、報徳二宮神社内の和食レストラン「食楽庵 報徳」にて、検査に適した健康的で美味しい特別ディナーをお召し上がりいただけます。

The evening before your gastric cancer and colorectal cancer screening, you can enjoy a special healthy and delicious dinner suitable for the examination at the affiliated Japanese restaurant 'Shokurakuan Hotoku' located within the Hotoku Ninomiya Shrine. ※Meal cost not included



Generation Endoscope System
FUJIFILM ELUXEO 7000System



食楽庵 報徳
Japanese Food Restaurant
Shokurakuan Hotoku
In Hotoku Ninomiya Shrine



hot spring

検査前日の夜から下剤を飲んでいただきます。快適にリラックスして検査をお受けいただくために、大腸ドック前日の宿泊は小田原箱根健診クリニックと同じ建物内のホテル「天成園 小田原駅別館」で快適にお過ごしいただくことをお勧めしております。

You will need to take a laxative starting the night before the examination. To ensure you have a comfortable and relaxed experience, we recommend staying at the onsen hotel 'Tenseien Odawara Station Hotel,' located in the same building as the Odawara Hakone Kenshin Clinic, the night before your gastric cancer and colorectal cancer screening. ※Accommodation cost not included

Same building



Medical Center

Hotel

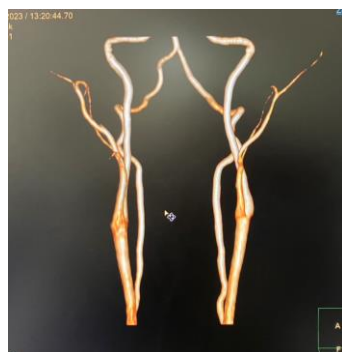


天成園 小田原駅別館
Tenseien Odawara
Station Hotel

B

脳ドック Brain Screening

所要時間：約40分
Required time of about 40 min.



**最高水準のMRI撮影装置により
脳卒中や脳梗塞のリスクを解析！**

**Analysis of the risk of stroke and cerebral infarction using
the highest level of MRI photography equipment in Japan!**

脳の病気は突然死を招く恐ろしい病気です。一命をとりとめても、深刻な後遺症を残すこともあります。一方で、早期にリスクを発見することで、薬による治療も可能です。大切なご家族、仕事のためにも、脳ドックの受診をおすすめします。



Magnetic Resonance Imaging System (MRI)
PHILIPS Ingenia Elition 3.0T

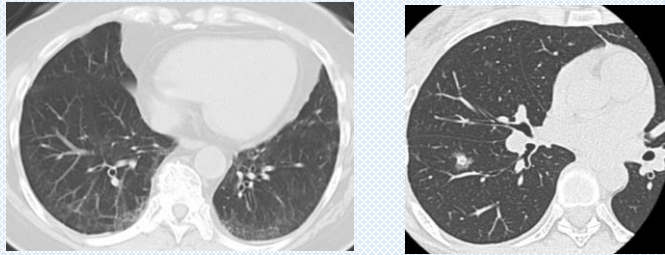


U
P
Ultrasound System
PHILIPS Affiniti30

Brain disease is a dreadful disease that can lead to sudden death. Even if you live, you may have serious sequelae. On the other hand, early detection of risks allows treatment with drugs. We recommend that you have a brain dock for your family and work.



肺ドック Lung Screening



呼吸器疾患は初期段階では症状や検査所見の異常を伴わないことが多く、発見が遅くなると治療が困難となり、死亡率が高くなっています。

精密検査による**早期発見+早期治療**が重要です。

Respiratory diseases are often not accompanied by symptoms or abnormal laboratory findings in the early stages, and slow detection is associated with difficulties in treatment and high mortality.

Early detection and early treatment by workup is important.

CT検査+腫瘍マーカー
所要時間:約30分

CT test and tumor-marker
Required time of about 30 min.

肺がん・肺気腫・肺炎
間質性肺炎などの早期に発見に！
Early detection of Lung cancer,
emphysema, pneumonia
and interstitial pneumonia!

肺がんを早期に発見するために、胸部CT検査と4つの腫瘍マーカー検査が使用されます。小田原箱根健診クリニックでは低線量胸部CT検査なので、被ばくを抑えながら十分な画像が得られますので、安心して受診していただけます。

タバコを吸う方、喫煙歴のある方、40歳以上の方に特にお勧めします。

A chest CT test and four tumor-marker tests are used to detect lung cancer at an early stage.

Because the Odawara Hakone Kenshin Clinic is a low-dose chest CT examination, you can obtain adequate images while keeping the exposure to radiation, so you can see your doctor with confidence. It is especially recommended for people who smoke cigarettes, those who have a history of smoking, and those who are older than 40.

Computed Tomography System (CT)
GE HealthCare Revolution Maxima



DWIBS (Diffusion Weighted Whole Body Imaging with Background Body Signal Suppression)

MRIの高性能化により可能となった検査で、頸部から骨盤までを撮影し、全身のがん検索が可能です。PET-CTよりも制限が少なく、検査の手軽さでは優れています。【所要時間：約60分】

This is a test enabled by the enhancement of MRI performance. The neck to the pelvis is photographed and the entire body can be searched for cancer. It is less restrictive than PET-CT and superior in the ease of examination. 【 Required time of about 60 min.】

● DWIBSとPET-CTの比較

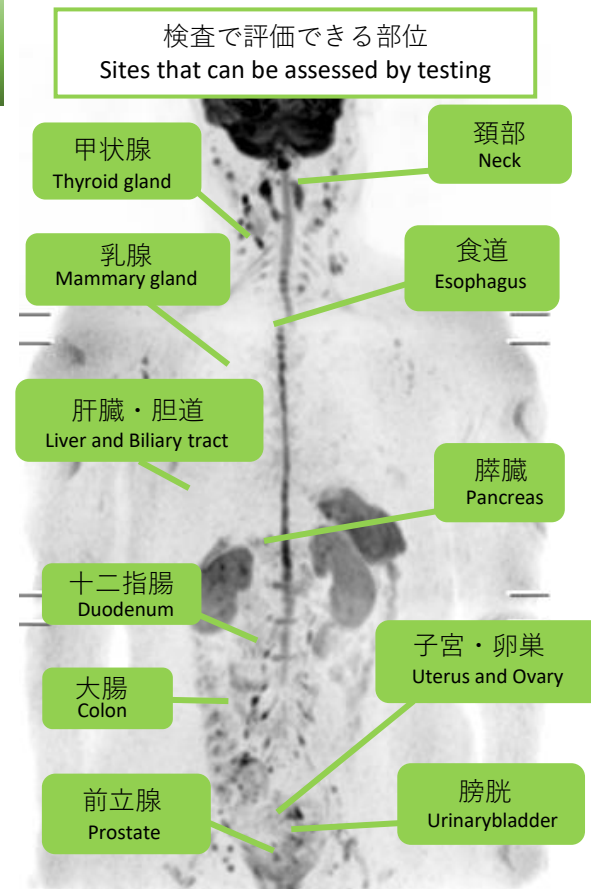
	DWIBS	PET-CT
注射	なし	検査薬を静脈注射
食事制限	なし	検査前絶食 インスリン制限
被ばく	なし	注射薬と放射線
検査時間	40分程度	注射含め2-3時間
検査前処置	なし	注射後安静1時間→検査開始
検査後制限	なし	放射能が下がるまで待機
糖尿病患者	検査可	検査制限や結果に偏りが出る可能性あり
検査不可	MRI禁止事項に準ずる※	糖尿病患者で結果が正確に出ないことあり

※MRI禁止事項：体内/体外金属がある、妊娠中、医療機器装着がある、入れ墨(タトゥー)がある、閉所恐怖症がある等

● DWIBS vs PET-CT

	DWIBS	PET-CT
Injection.	None	Intravenously inject test drugs
Dietary restriction	None	Pretest fasting insulin restriction
Exposure	None	Injection drugs and radiation
Examination time	About 40 minutes	2-3 hours including injection
Pretest treatment	None	1 hour of rest after injection → start of examination
Post-test restriction	None	Wait until radioactivity falls
People with Diabetes	Test permitted	Possible bias in test restrictions and results
Test not possible	Same as MRI prohibited matters*	Results may not be accurate in patients with diabetes

※Prohibition of MRI: Intracorporeal/extracorporeal metals, pregnant, with medical equipment, tattooing, claustrophobia, etc.



DWIBS検査で撮影した画像
Images taken during DWIBS

Magnetic Resonance Imaging System (MRI)
PHILIPS Ingenia Elition 3.0T



Tokyo's Closest Castle Town
ODAWARA

Sightseeing Menu

Exclusive Experiences
And
Taxi tour





Odawara has amazing food !



Sushi, Tempura, Ramen, Sweets, Sake etc...



Exclusive Experiences ①



Ninja, Samurai Castle Experience

About 2.5 hours

Hosted by one of Japan's leading ninja experts and a bilingual local guide, learn the history and stories behind the ninja and samurai at Odawara Castle. Try out real ninja weapons and techniques in a hands-on class led by an expert.



Zen Meditation at Odawara Castle

About 1.5 hours

Odawara Castle is yours for this exclusive experience held after hours at the top of Odawara Castle. The experience is led by a bilingual local zen monk and includes meditation and interaction to make this an unforgettable time for you.



Castle & Town Discovery Tour

About 3 hours

Discover the history, culture, and people of Odawara on this guided walking tour. This personalized walk is an amazing way to connect and feel the people and places of Japan.



Odawara Fish Market

Discover a special side of Japan with this exclusive guided tour of the Odawara Fish Market and port. Get a guided experience of the exciting morning fish auction, see local fish headed off to market, and learn about this important part of Japanese culture and history.

NEW EXPERIENCE

Become a Lord of Odawara Castle

Odawara Castle invites you to an exclusive experience becoming a lord of the castle. Get suited in samurai armor, walk the castle grounds, be entertained and enjoy ninja experience during your time.



Exclusive Experiences ②



Enoura Observatory Tour

About 3 hours

Take a taxi from Odawara Station to Enoura Observatory.
With English guide.

Includes taxi fare (half day), entrance fee, and guide fee.



Cycling & Mountain Biking

About 3 hours

There is a mountain bike plan that takes you through the forest, and a road plan that takes you through town.

Cycling lessons and mountain biking expenses included.



Hakone geisha tatami Play experience plan

About 3 hours

While enjoying Kaiseki cuisine at one of Odawara's most famous restaurants, Oshimizu, You can experience Hakone Yumoto's geisha dance and geisha play.
Meal fee (drink not included)

Dinner plan the day before colonoscopy

about 3 hours

This is a dinner plan for the day before a colonoscopy. At the restaurant at Hotoku Ninomiya Shrine in Odawara Castle, you can enjoy easily digestible and healthy Japanese food made with local, seasonal ingredients.

Meal fee (drink not included)



Contact



Exclusive Experiences ③

Explore Hakone

Personalized private tour in Hakone. Customize your private tour of Hakone, a popular destination in Fuji-Hakone-Izu National Park known for its hot spring resorts.



Book now



From \$ 500

Taxi tour

A chartered taxi will take you to the place you want to go.
If you do not have a preference, we will guide you to recommended spots.



Book now



Taxi charter sightseeing plan (1 day)

Taxi charter sightseeing plan (half day)

Personal Shopping in Tokyo

ブランディングスタイリスト® 小野田史氏による
唯一無二の東京パーソナルショッピング



Tokyo No.1 Fashion Guide

Hitoshi Onoda

Fashion & Branding Stylist®
CEO of FASHION PARTNER Inc.

Based in Tokyo. As a fashion stylist, he engages in fashion styling for advertising campaigns, domestic/international fashion magazines and other publications, and celebrities and other public figures, as well as fashion-related direction. He has also been invited to fashion shows such as the Paris collections of Louis Vuitton and Hermès and the Milan collections of Gucci.



国内外のファッション誌、テレビCMをはじめ、高橋一生氏や高良健吾氏など、数多くの芸能人、著名人のスタイリストを務める。ルイ・ヴィトンやエルメスのパリコレクション、グッチのミラノコレクションにも招待され、世代や職種を問わないブランディングのスペシャリストとして活躍している。

Profile



アルファード送迎付き

小田原箱根健診クリニックまたはホテル→
ショッピング→ホテルまたは成田/羽田空港

Tokyo City Cruise in TOYOTA Alphard

Designated departure location, 3 hours of shopping in a designated area, and transportation to Designated place of arrival.

*Limited to designated pick-up and drop-off locations (Tokyo, Chiba, Kanagawa, Narita Airport, Haneda Airport, and other locations within 100 km from Tokyo).

Shopping hours are from 11:00 to 19:00. Please note the departure/transfer time of the designated arrival location)



✉ contact@fashionpartner.co.jp

www.fashionpartner.co.jp

Various customized Tokyo fashion tours are also available.



高級ブランドの洋服、バック、時計、ジュエリー、日本の伝統的な刀剣や着物など、小野田史氏がコーディネート。プロフェッショナルによるガイドで、東京でのお買い物をより一層お楽しみいただけます。



表参道、銀座など、日本を代表する高級ブランドエリアで特別なショッピングを
Choose one of 3 areas (3 hours / Up to 2 people)

For a group with 3 people or more, an additional vehicle will be provided at an additional charge (Please be sure to inform us in advance if children or family members will be riding with you).
Interpretation services not included. No pick-up and drop-off plans are also available.

Omotesando
Area

Shopping for
Luxury brands
in Tokyo's fashion
capital
(Louis Vuitton,
Chanel, Gucci,
Hermes, etc.)

Ginza
Area

Shopping for
Antique, Watch,
and Jewelry
in Tokyo's luxury
Spots
(Kimono, Token
(sword), Rolex, etc.)

Customized
Area

Shopping for Rare
items at your
desired location in
Tokyo
(Vintage jeans,
Premium sneakers,
Street brands, etc.)

As a rule, we ask that reservations be made at least one week in advance. However, we may be able to accommodate reservations made less than one week in advance, so please contact us by e-mail first. Payment of the service fee is due 7 days prior to the date of service, with confirmation of receipt of payment. Cancellations will be subject to a 20% cancellation fee up to 5 days prior to the service date, a 50% cancellation fee up to 3 days prior to the service date, and a 100% cancellation fee for cancellations made after the service date. No refunds are allowed after payment.

Recommended Route 1

- Comprehensive Health checkup “Fuji” (1.5Days)
- Healthy & Anti-Aging IV Therapy
- Odawara Sightseeing & Personal Shopping

Day 1

14:00～
小田原城 & 街歩きツアー
Castel and town Discovery tour



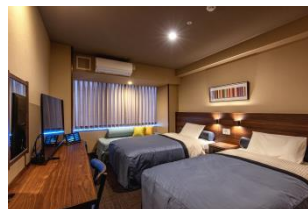
17:00～
報徳二宮神社
Visit Hotoku
Ninomiya Shrine.



18:00～
食楽庵で大腸検査適した
ディナー
Have the ideal dinner for
Colonoscopy prep at
“Shokurakuan” in Hotoku
Ninomiya Shrine



天成園小田原駅別館宿泊 (2泊/温泉)
Stay at Tenseien Odawara Station Hotel (2nights)



Day 2

8:30～
小田原箱根健診クリニック
で人間ドック
Comprehensive Health
Checkup “Fuji” at Odawara
Hakone Kenshin Clinic



17:00～
ディナー
Have dinner in Tenseien
Odawara Station Hotel

Day 3

8:30～
小田原箱根健診クリニックで
人間ドックと健康点滴
Comprehensive Health Checkup
“Fuji” and Healthy & Anti-Aging
IV Therapy at Odawara Hakone
Kenshin Clinic



12:00
箱根芸者お座敷体験を楽しみ
ながら昼食
Experience Geisha Performance
and have lunch



16:00
富士屋ホテル宿泊 (1泊/温泉)
Relax in the hot spring and
stay at Fujiya Hotel (1night)



Day 4

10:00～
江之浦測候所
Enjoy Enoura Observatory



12:00～
小田原漁港で海鮮ランチ
Have seafood lunch at
Odawara fishing port



15:00～
東京パーソナルショッピング
Personal shopping in Tokyo



Stay at Tokyo or go to airport

Recommended Route 2

- Comprehensive Health checkup “Sakura”
- Healthy & Anti-Aging IV Therapy
- Odawara Sightseeing & Personal Shopping

Day 1

14:00～
着物で小田原まち歩き
Enjoy walking Odawara Castel Town
wearing Kimono

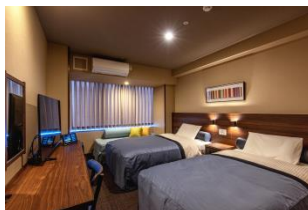


17:00～
報徳二宮神社
Visit Hotoku Ninomiya Shrine.

18:00～
食楽庵でディナー
Have dinner at
“Shokurakuan”
in Hotoku Ninomiya
Shrine

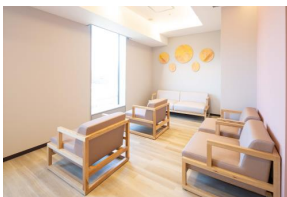


天成園小田原駅別館宿泊 (2泊/温泉)
Stay at Tenseien Odawara Station Hotel
(2nights)



Day 2

8:30～
小田原箱根健診クリニックで
人間ドック
Comprehensive Health Checkup
“Sakura” at Odawara Hakone
Kenshin Clinic



14:30～
ミナカ小田原内のレストランで
ランチ
Have lunch at a restaurant in the
Minaka Odawara Bldg.

15:30～
小田原城で忍者体験
Experience Ninja at Oawara Castel

清閑亭で箱根芸者お座敷体験
を楽しみながらディナー
Experience Geisha Performance
and have dinner



Day 3

8:30～
小田原箱根健診クリニック
で健康点滴
Healthy & Anti-Aging IV
Therapy at Odawara Hakone
Kenshin Clinic

10:00～
宿場町と海辺をサイクリング
Cycling around Odawara post town
and the seaside

13:00～
かまぼこ通りで食べ歩き
Enjoy delicious food at
Kamaboko St.
In Odawara
post town



17:00～
小田原城で禅体験
Zen Meditation at Odawara Castle



山家荘でディナー & 宿泊 (1泊/温泉)
Relax in the hot spring, have dinner and
Stay at Yamagasou (1night)

Day 4

11:00～
農家レストラン・きのこ苑お山
のたいしょうで、自然体験と健
康的な食事を楽しむ
Enjoy a nature experience and a
healthy meal at the farmer's
restaurant,
Kinokoen
Oyama-no
Taisho



15:00～
東京パーソナルショッピング
Personal shopping in Tokyo



Stay at Tokyo or go to airport



Recommended Route 3

- Comprehensive Health checkup “Ocean”
- Healthy & Anti-Aging IV Therapy
- Odawara Sightseeing & Explore Hakone

Day 1

- 14:00～
小田原城で城主体験
Become a Lord of Odawara Castle



- 天成園小田原駅別館で夕食と宿泊
(2泊/温泉)
Have dinner and Stay
at Tenseien Odawara
Station Hotel (2nights)



Day 2

- 8:30～
小田原箱根健診クリニックで
人間ドック
Comprehensive Health Checkup
“Ocean” at Odawara Hakone
Kenshin Clinic



- 15:30～
グルメ三昧
Enjoy amazing food in Odawara



Day 3

- 5:00～
小田原漁港でセリ見学
& 朝食ツアー
Odawara
Fish market
Tour and
Breakfast



- 箱根健診クリニックで健康点滴
Healthy & Anti-Aging IV
Therapy at Odawara Hakone
Kenshin Clinic



- 13:00～
老舗めぐり
Visit to traditional
shops in Odawara



- 箱根ホテルでディナー
& 宿泊 (2泊/温泉)
Relax in the hot spring, have dinner
And Stay at Hakone Hotel (2night)

Day 4

- 10:00～
箱根プライベートツアー
Private tour of Hakone



- 13:00
箱根の甘酒茶屋でランチ
Have lunch at the historic
Amazake Chaya in Hakone





〒250-0045
神奈川県小田原市栄町1-1-15ミナカ小田原7階
<https://odawara-kenshin.com/>



Minaka Odawara Building - 7th Floor, 1-1-15 Sakaecho, Odawara-shi, Kanagawa
250-0011, Japan
<https://odawara-kenshin.com/en/>

